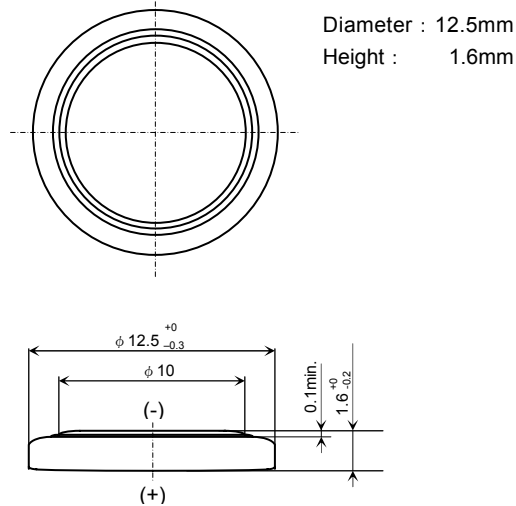


Lithium Manganese Dioxide Battery

CR1216

■ Dimensions(mm)



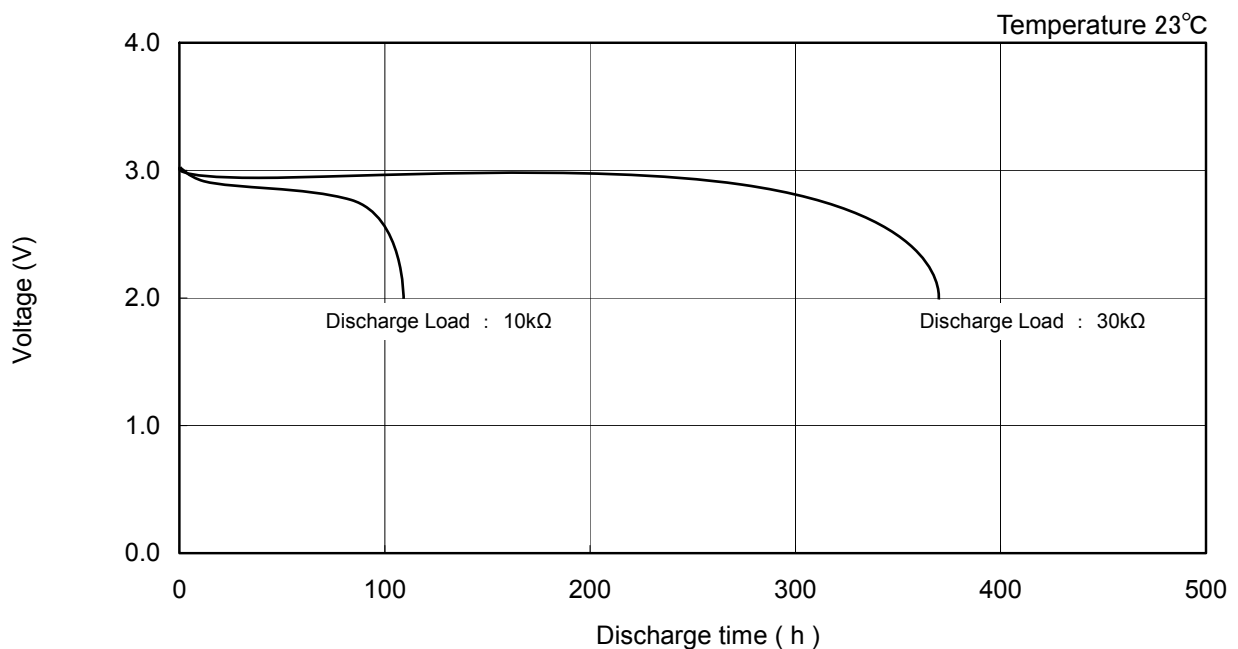
■ Specifications

| | |
|---------------------------------|-------|
| Nominal Voltage | 3V |
| Nominal Capacity (2.0V cutoff) | 30mAh |
| Standard Discharge Current | 0.1mA |
| Weight | 0.7g |

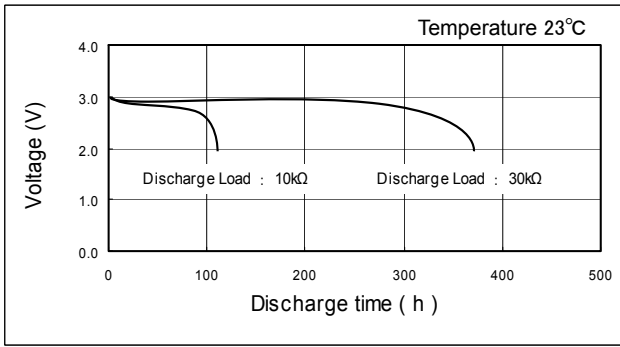
Applications

- Electronic Watch or Clock
- Electronic Calculator
- Memory Back-up Power Source for SRAM or Real Time Clock (RTC)

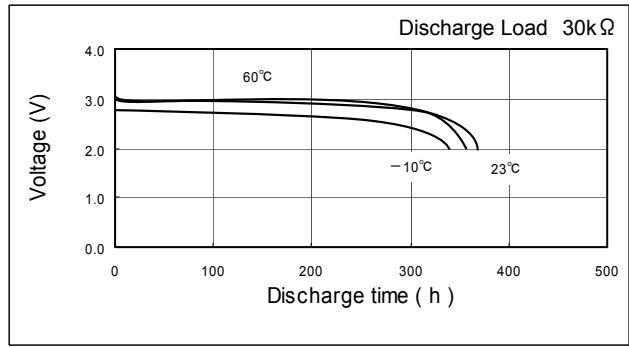
■ Discharge Characteristics



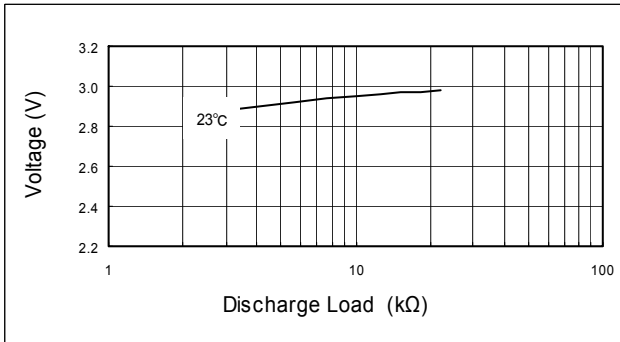
■ Discharge Characteristics on Load



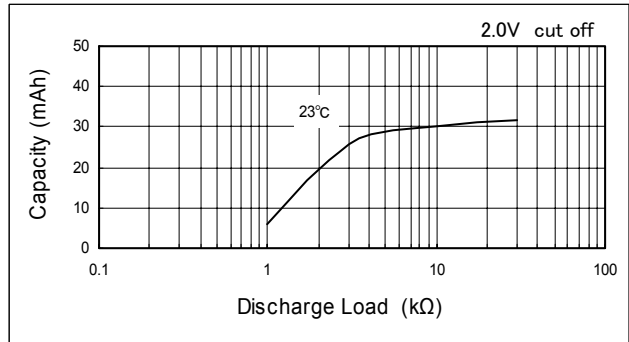
■ Discharge Characteristics on Temperature



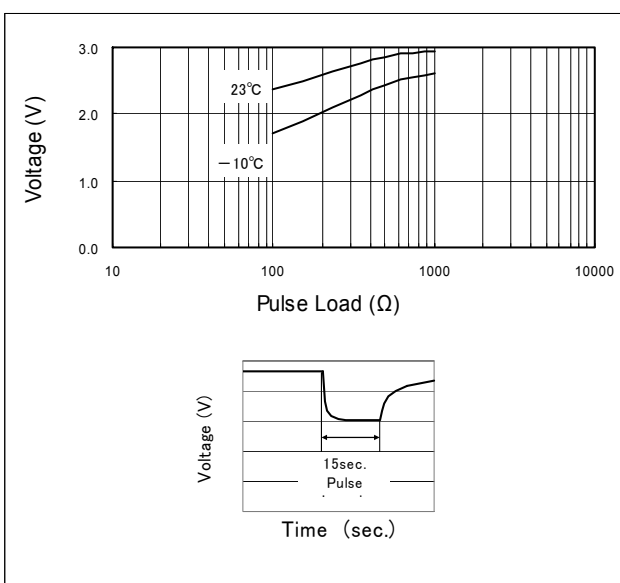
■ Discharge Load vs. Operation Voltage (Discharge depth 40%)



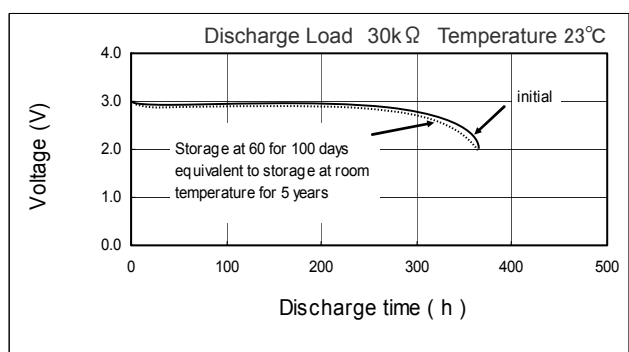
■ Discharge Load vs. Discharge Capacity



■ Discharge Characteristics on Pulse Load (Discharge depth 40%)



■ Storage Characteristics



* These values are not guarantee.